

Academic Performance, Dropout Rates and Attendance Rates in Texas Public Schools Correlated to Fine Arts Course Enrollment

An analysis 2005-2007 data reported by Texas public school campuses completed by the Texas Music Educators Association and the Texas Coalition for Quality Arts Education

Data Source

Data included in the study was obtained from TEA as reported by Texas school districts.

- Fine arts course enrollment
- Campus academic achievement rating
- Campus attendance rates
- Campus dropout rates

Conclusions

- ***Academic Rating:*** campuses with a higher percentage of student enrollment in fine arts courses achieved higher academic ratings.
- ***Student Dropout:*** campuses with a higher percentage of student enrollment in fine arts courses report lower Dropout rates.
- ***Student Attendance:*** campuses with a higher percentage of student enrollment in fine arts courses reported higher attendance rates.

Campus Academic Rating

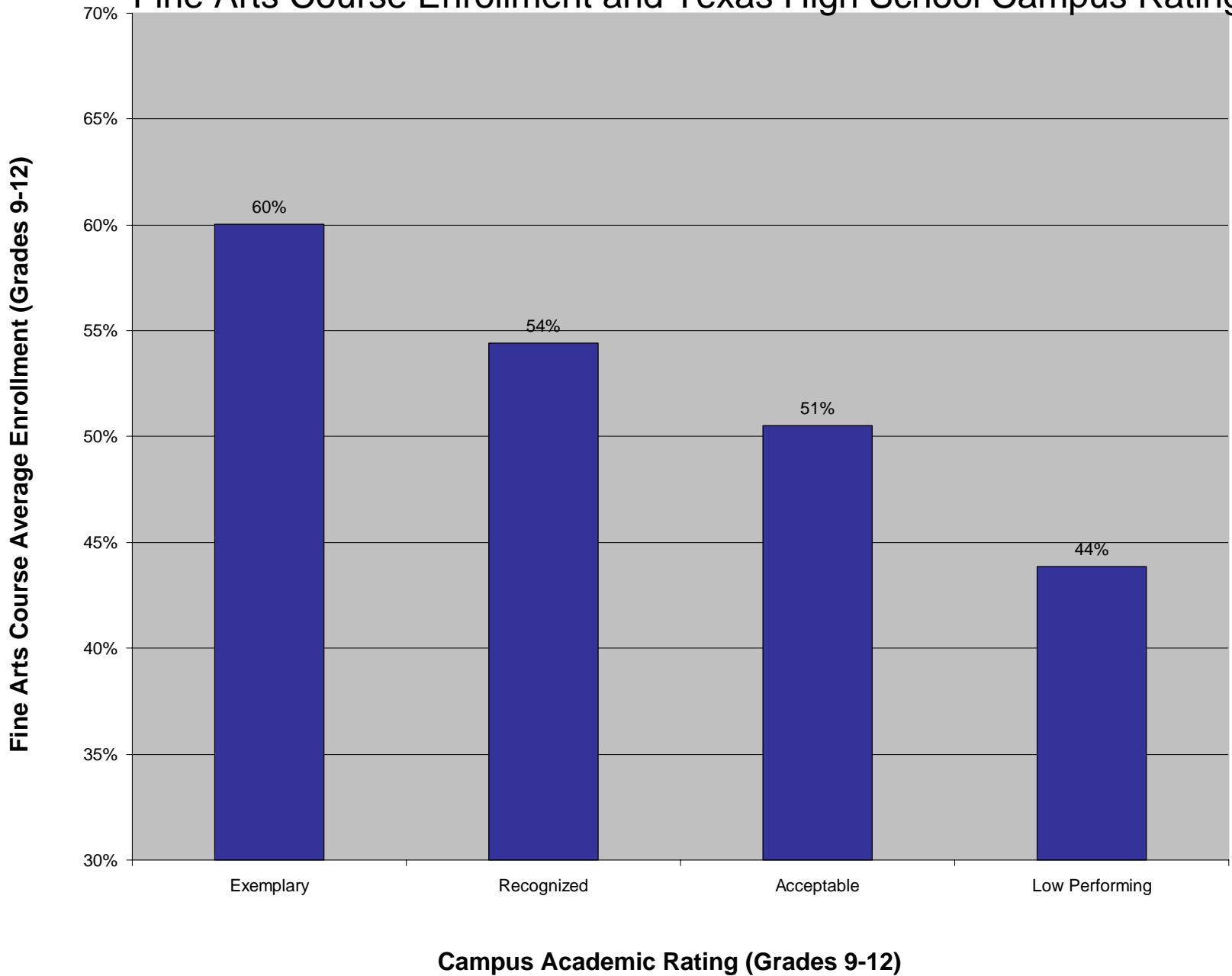
9-12 Campuses

RATING	Number of Campuses	Fine Arts Average Enrollment
Exemplary	8	60.04%
Recognized	123	54.41%
Acceptable	713	50.50%
Low Performing	107	43.88%

6-8 Campuses

RATING	Number of Campuses	Fine Arts Average Enrollment
Exemplary	24	72.63%
Recognized	307	70.19%
Acceptable	481	66.97%
Low Performing	52	66.02%

Fine Arts Course Enrollment and Texas High School Campus Ratings



Dropout Rates

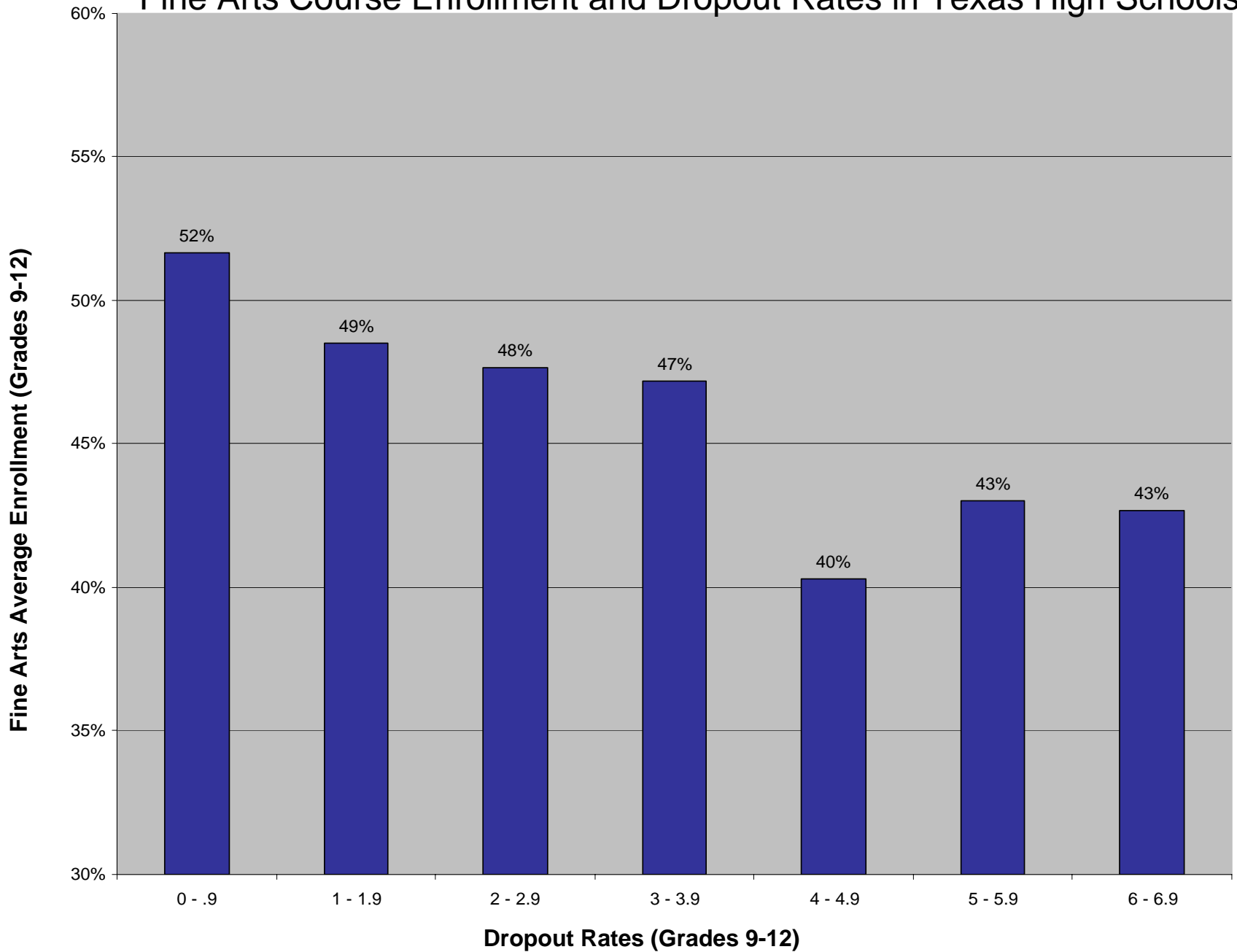
9-12 Campuses

Dropout Rate	Number of Campuses	Fine Arts Average Enrollment
0 - .9	617	51.66%
1 - 1.9	207	48.52%
2 - 2.9	77	47.65%
3 - 3.9	30	47.18%
4 - 4.9	19	40.28%
5 - 5.9	4	43.03%
6 - 6.9	4	42.70%

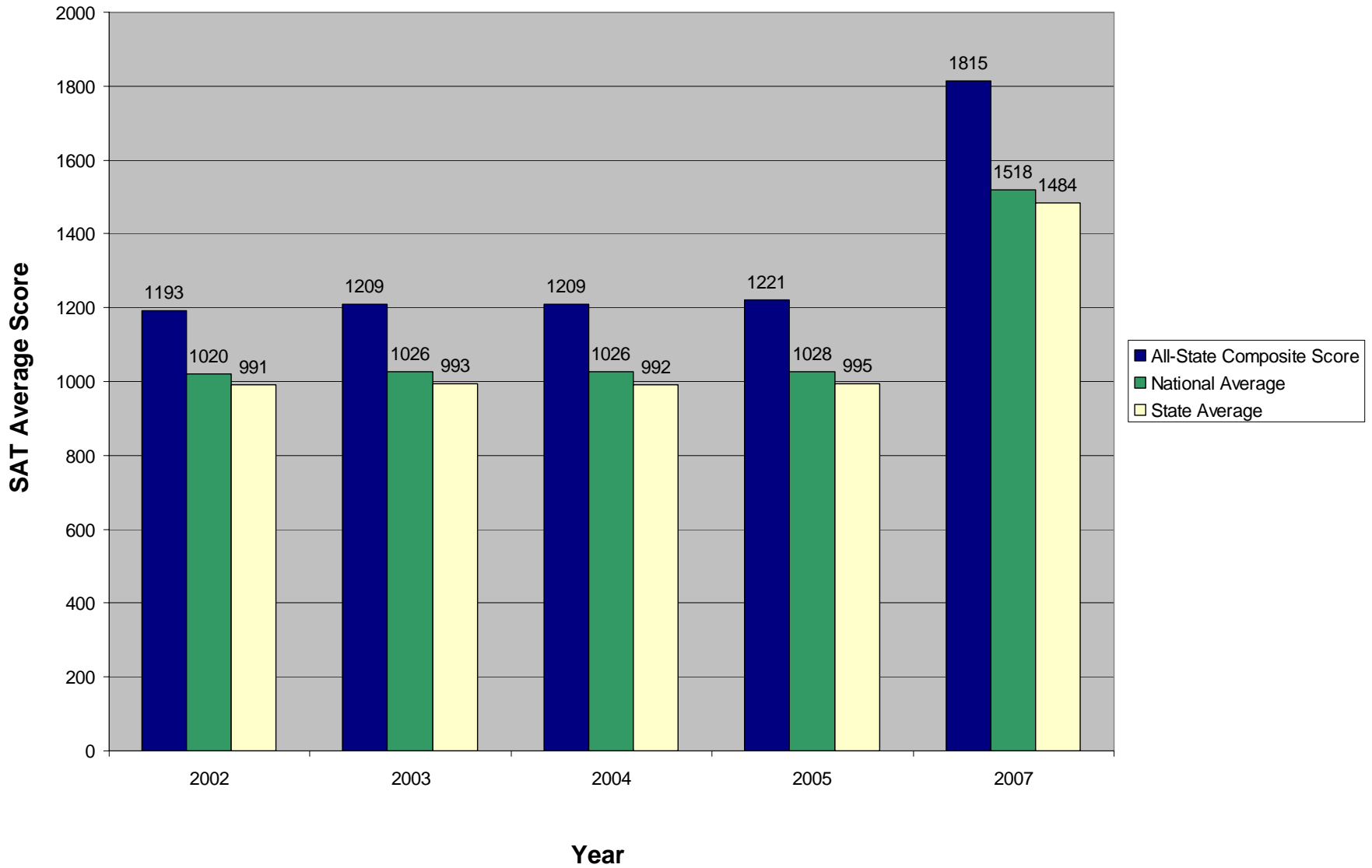
6-8 Campuses

Dropout Rate	Number of Campuses	Fine Arts Average Enrollment
0 - 0.9	836	67.58%
1 - 1.9	18	60.29%

Fine Arts Course Enrollment and Dropout Rates in Texas High Schools



Texas All-State Musician SAT Scores Compared to Average



Comparing National SAT Scores of Students Enrolled in Fine Arts to Those with No Fine Arts Coursework

